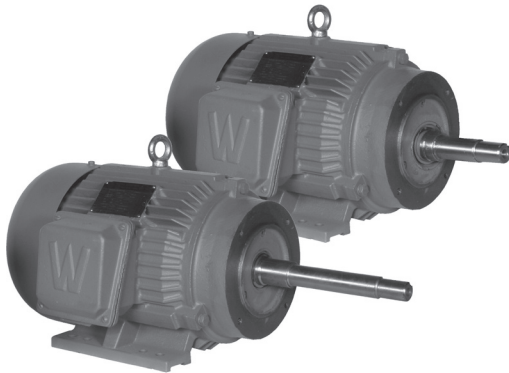


# WORLDWIDE CLOSE COUPLED PUMP MOTORS HIGH EFFICIENCY

TEFC Enclosure ▪ C-Face ▪ Rigid Base  
Three-Phase ▪ 208-230/460 Volt



## Product Overview

- 1-50 HP
- 3600 and 1800 RPM
- 208-230/460 volt
- TEFC enclosure
- 1.15 service factor
- Class F insulation
- C-face - rigid base
- High efficiency
- Suitable for 50 hz operation with 1.0 service factor

HP	RPM	Voltage	Frame	Model Number	List Price	FL Amps (A)	FL Eff. (%)	Approx. Wt. (lbs.)	Notes
1	1800	208-230/460	143JM	WWE1-18-143JM	-	1.5	82.5	55	
	1800	208-230/460	143JP	WWE1-18-143JP	-	1.5	82.5	55	
1.5	3600	208-230/460	143JM	WWE1.5-36-143JM	-	1.9	82.5	50	
	3600	208-230/460	143JP	WWE1.5-36-143JP	-	1.9	82.5	50	
	1800	208-230/460	145JM	WWE1.5-18-145JM	-	2.1	84.0	55	
	1800	208-230/460	145JP	WWE1.5-18-145JP	-	2.1	84.0	55	
2	3600	208-230/460	145JM	WWE2-36-145JM	-	2.5	84.0	50	
	3600	208-230/460	145JP	WWE2-36-145JP	-	2.5	84.0	50	
	1800	208-230/460	145JM	WWE2-18-145JM	-	2.7	84.0	60	
	1800	208-230/460	145JP	WWE2-18-145JP	-	2.7	84.0	60	
3	3600	208-230/460	145JM	WWE3-36-145JM	-	3.6	85.5	60	
	3600	208-230/460	145JP	WWE3-36-145JP	-	3.6	85.5	60	
	3600	208-230/460	182JM	WWE3-36-182JM	-	3.6	85.5	92	
	3600	208-230/460	182JP	WWE3-36-182JP	-	3.6	85.5	92	
	1800	208-230/460	182JM	WWE3-18-182JM	-	3.9	87.5	90	
	1800	208-230/460	182JP	WWE3-18-182JP	-	3.9	87.5	90	
5	3600	208-230/460	184JM	WWE5-36-184JM	-	5.7	87.5	101	
	3600	208-230/460	184JP	WWE5-36-184JP	-	5.7	87.5	101	
	1800	208-230/460	184JM	WWE5-18-184JM	-	5.9	87.5	110	
	1800	208-230/460	184JP	WWE5-18-184JP	-	5.9	87.5	110	
7.5	3600	208-230/460	184JM	WWE7.5-36-184JM	-	8.4	88.5	112	
	3600	208-230/460	184JP	WWE7.5-36-184JP	-	8.4	88.5	112	
	3600	208-230/460	213JM	WWE7.5-36-213JM	-	8.4	88.5	148	
	3600	208-230/460	213JP	WWE7.5-36-213JP	-	8.4	88.5	148	
	1800	208-230/460	213JM	WWE7.5-18-213JM	-	9.3	89.5	150	
	1800	208-230/460	213JP	WWE7.5-18-213JP	-	9.3	89.5	150	

# WORLDWIDE CLOSE COUPLED PUMP MOTORS HIGH EFFICIENCY

TEFC Enclosure ▪ C-Face ▪ Rigid Base  
Three-Phase ▪ 208-230/460 Volt



HP	RPM	Voltage	Frame	Model Number	List Price	FL Amps (A)	FL Eff. (%)	Approx. Wt. (lbs.)	Notes
10	3600	208-230/460	215JM	WWE10-36-215JM	-	11.2	89.5	181	
	3600	208-230/460	215JP	WWE10-36-215JP	-	11.2	89.5	181	
	1800	208-230/460	215JM	WWE10-18-215JM	-	12.4	89.5	179	
	1800	208-230/460	215JP	WWE10-18-215JP	-	12.4	89.5	179	
15	3600	208-230/460	215JM	WWE15-36-215JM	-	16.7	90.2	186	
	3600	208-230/460	215JP	WWE15-36-215JP	-	16.7	90.2	186	
	3600	208-230/460	254JM	WWE15-36-254JM	-	16.6	90.2	260	
	3600	208-230/460	254JP	WWE15-36-254JP	-	16.6	90.2	260	
	1800	208-230/460	254JM	WWE15-18-254JM	-	17.7	91.0	290	
	1800	208-230/460	254JP	WWE15-18-254JP	-	17.7	91.0	290	
20	3600	208-230/460	256JM	WWE20-36-256JM	-	22.5	90.2	331	
	3600	208-230/460	256JP	WWE20-36-256JP	-	22.5	90.2	331	
	1800	208-230/460	256JM	WWE20-18-256JM	-	23.8	91.0	326	
	1800	208-230/460	256JP	WWE20-18-256JP	-	23.8	91.0	326	
25	3600	208-230/460	256JM	WWE25-36-256JM	-	28.0	91.0	335	
	3600	208-230/460	256JP	WWE25-36-256JP	-	28.0	91.0	335	
	3600	208-230/460	284JM	WWE25-36-284JM	-	28.0	91.0	381	
	3600	208-230/460	284JP	WWE25-36-284JP	-	28.0	91.0	381	
	1800	208-230/460	284JM	WWE25-18-284JM	-	28.2	92.4	400	
	1800	208-230/460	284JP	WWE25-18-284JP	-	28.2	92.4	400	
30	3600	208-230/460	286JM	WWE30-36-286JM	-	32.9	91.0	523	
	3600	208-230/460	286JP	WWE30-36-286JP	-	32.9	91.0	523	
	1800	208-230/460	286JM	WWE30-18-286JM	-	33.6	92.4	451	
	1800	208-230/460	286JP	WWE30-18-286JP	-	33.6	92.4	451	
40	3600	208-230/460	286JM	WWE40-36-286JM	-	45.0	91.7	525	
	3600	208-230/460	286JP	WWE40-36-286JP	-	45.0	91.7	525	
	3600	208-230/460	324JM	WWE40-36-324JM	-	46.3	91.7	533	
	3600	208-230/460	324JP	WWE40-36-324JP	-	46.3	91.7	533	
	1800	208-230/460	324JM	WWE40-18-324JM	-	46.5	93.0	589	
	1800	208-230/460	324JP	WWE40-18-324JP	-	46.5	93.0	589	
50	3600	208-230/460	326JM	WWE50-36-326JM	-	56.7	92.4	620	
	3600	208-230/460	326JP	WWE50-36-326JP	-	56.7	92.4	620	
	1800	208-230/460	326JM	WWE50-18-326JM	-	57.3	93.0	640	
	1800	208-230/460	326JP	WWE50-18-326JP	-	57.3	93.0	640	

WORLDWIDE  
CLOSE COUPLED PUMP

